



**forever**  
**glacier**

Tour Proposal

# forever glacier

An exhibit challenging us to protect our wild places and honor the legacy of Glacier National Park

"The language of the wilderness is the best language we have, and it is our job to sing it."

PAM HOUSTON, DEEP CREEK

My 42 years in Montana as an artist have given me a voice, a voice that is expressed through my paintings. When I first depicted a large Glacier Park mammal after many visits to the Park, it was big and bold and full of spirit, and it was strong. I had to sing.

Little did I know that this was the beginning of Forever Glacier: The Legacy Project, and there was no going back. One great "beastie" painting followed another: bison, mooses, big horn sheep, grizzly bears, cougars, porcupines—all members of the large mammals of Glacier Park. Some of the impetus came from creating several pairings commemorating the Going to the Sun Road and the Glacier Centennial in 2008 and 2010. But what really called to me were the wonderfully larger-than-life mammals that thrive in the park and the National Park Service, one of America's best ideas.

I started thinking about habitat destruction and climate change and how these impacted our world and Glacier Park in particular.

When I read about the warning trends impacting the alpine ptarmigan, I was compelled to paint four composite pairings representing most of the small mammals of the Park, each in their own habitat: alpine meadow, old growth forest, prairie and grasslands, and river bottom.

The Blackfoot creation stories are woven throughout the exhibit. This widens the perspective and offers us their belief that Glacier Park is the Backbone of Creation with all the four-legged and winged as our brothers, sisters and teachers.

I am lucky to live in a place that gives me room to breathe deeply and create. The artist that I have become has a bold voice, depicting strong form and saturated color. It isn't just about Glacier Park or preserving wild places; it is about being all that I can be. I hope this body of work challenges all of us to fill the spaces we are given, and to sing out and preserve those wild places both within and outside of ourselves.

NANCY DUNLOP CAWDREY, 2020



NANCY DUNLOP CAWDREY, 2020

Exhibit Welcome Wall Layout

The Forever Glacier touring exhibit was developed over a decade and was launched in 2020, employing one artist's expression to portray the language of the wilderness.

The exhibit is about an artistic perspective, a native perspective and one of today's biggest issues: climate change on a global level.

The exhibit primarily consists of original paintings by award-winning artist, Nancy Dunlop Cawdrej, celebrating wildlife and wild places, using brilliant color in large format artwork.

Blackfoot Indian creation stories are woven throughout the exhibit, widening the perspective of a different paradigm in living and interacting on earth with the four legged and the winged as our teachers.

Western Masters, Inc (WMI) is a federally recognized 501(c)(3) non-profit and is the owner of the paintings that constitute the traveling exhibition. It is with WMI ([westernmasters.org](http://westernmasters.org)) that any interested Museum will contract for this tour. The agent for WMI is Nancy Cawdrej Studios, Inc.

## About the Artist

All the artwork is by acclaimed Montana artist, Nancy Dunlop Cawdrey, whose colorful and unique painting style is both award-winning and highly respected worldwide.

For the Forever Glacier collection, Ms. Cawdrey employed a complicated application of painting on silk with aqueous permanent dyes, a centuries-old technique developed in China that requires years of skill and prodigious raw talent to carefully guide the process. Much like painting with watercolor, silk painting requires patience and finesse to get the “paint” to behave as intended. The result is a rich, multi-layered and vibrantly colorful painting style that is dramatically different than that of other media.

Ms. Cawdrey studied watercolor and oil painting in both France and England for several years, scouring museums throughout Europe and finding inspiration along the way. She completed 120 plein air paintings while spending a year touring Italy with her family, using a simple 5 color palette employed by American painter John Singer Sargent. While vacationing in Hawaii, she discovered silk painting and began applying her studies of other media to this rich and vibrant medium, and for the past 29 years has refined her silk painting process.

Ms. Cawdrey has been recognized as a Glacier National Park Centennial Artist in 2010, a Featured Artist in Jackson Hole in 2014, and was commissioned by Glacier National Park for the 75th Anniversary of Going to the Sun Road. She has shown extensively in museum shows throughout the United States.

*Anne Morand, former curator of art at the National Cowboy & Western Heritage Museum in Oklahoma City, recalls watching Cawdrey for the first time: “I watched her create one of her paintings during a Quick Draw at a C.M. Russell Auction, and her command of the medium, her exquisite color, and her compositional skills amazed me.”*

*Said Phil Drescher, avid art collector and former Russell Museum board member: “Nancy has created her own genre of art with her signature silk paintings.”*

*Said Emeritus Cowboy Artist of America R.S. Riddick: “Nancy has always brought a sense of joy and color to her work—she is irreplaceable.”*



"If it isn't God's backyard,  
He certainly lives nearby."  
ROBIN WILLIAMS



*Alpine Meadow Wall Layout*

## Exhibition Overview

Forever Glacier started with a simple question: how do we inspire people across the country into taking 'stewardship' of the wild places that sustain wild creatures in our labyrinth of national parks and designated wilderness areas?

Glacier National Park's shrinking glaciers and changing habitats inspired Nancy Dunlop Cawdrey to create a traveling exhibit with the goal of raising awareness for the impact climate change is having on ecosystems and other wilderness areas throughout America. However, this exhibit is larger in scope than one national park. Glacier National Park becomes the microcosm for a truth and a challenge that is vital to our national community.

In this age of ubiquitous technology there is a critical need to provide real experiences that will nourish our spirits and ground us in our humanness. The arts do this. "I intentionally made these paintings big and bold and 'out of the box.' The challenges that face our world will require strength and innovation—that is the message," states the artist.

This tour also includes a Blackfoot Native American perspective, an integral part of the history of national parks. These are the indigenous people who have lived on the land for thousands of years, honoring all living things.

The exhibit offers a connection with wild places for those who have not yet had that experience.

## Exhibition Details

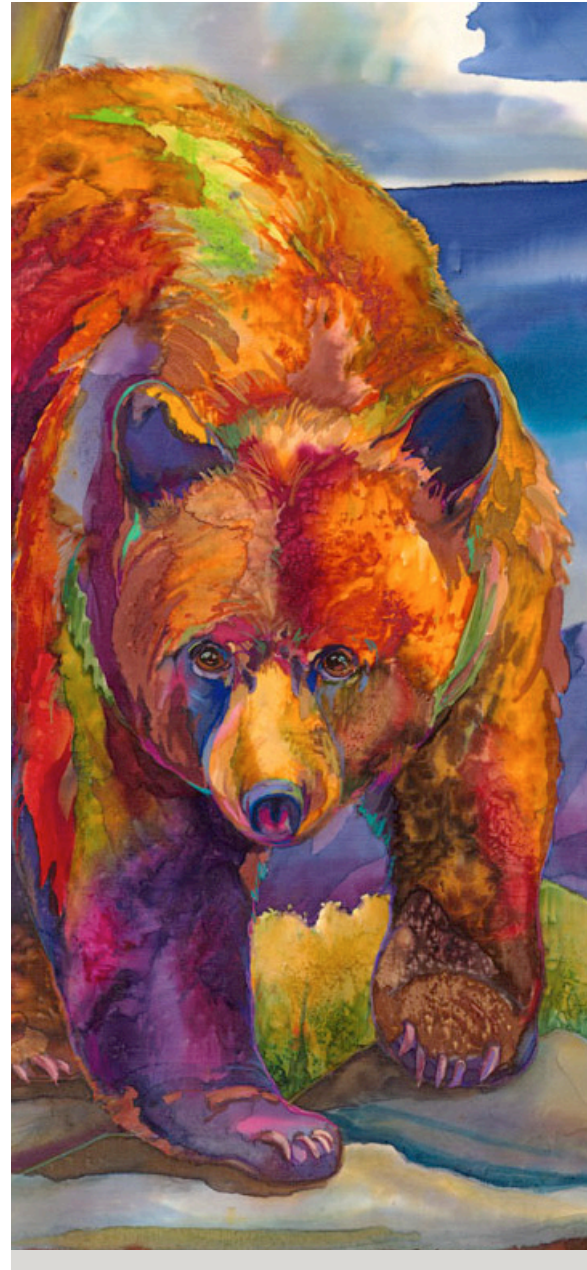
The entire show is fully curated and essentially is plug and play. Included with the rental are the Welcome/Introduction wall layout, a sample layout of one of the suggested five groupings, all the brand assets, selected quotes, and materials for handouts to help tell the Forever Glacier story.

The exhibit is organized into four different animal habitats consisting of four or five paintings per habitat and one group of paintings called Milestones. Forever Glacier also provides design recommendations and guidelines for habitat descriptions, credit panels, color palettes, and so forth.

The exhibit includes twenty-five (25) original Dye on Silk paintings that are large (most are 30" x 40"). The lineal space is 215 non-continuous feet for the artwork. Replica skulls, paw imprints, scat and replica pelts of several mammals are included for interactive display.

The virtual reality component includes four Oculus Go video headsets featuring the "Forever Glacier 360" immersive experiences in four different habitats showing the change of seasons. All are narrated by "Montana's Troubadour" Jack Gladstone, a member of the Blackfoot People. This exciting element provides an indigenous native perspective and insight about the area and its inhabitants, and will particularly appeal to children and younger patrons.

The entire exhibit is shipped in four custom built containers on casters plus a special art box that contains the largest painting. Each painting has a specifically made art box with both visual and written identification.

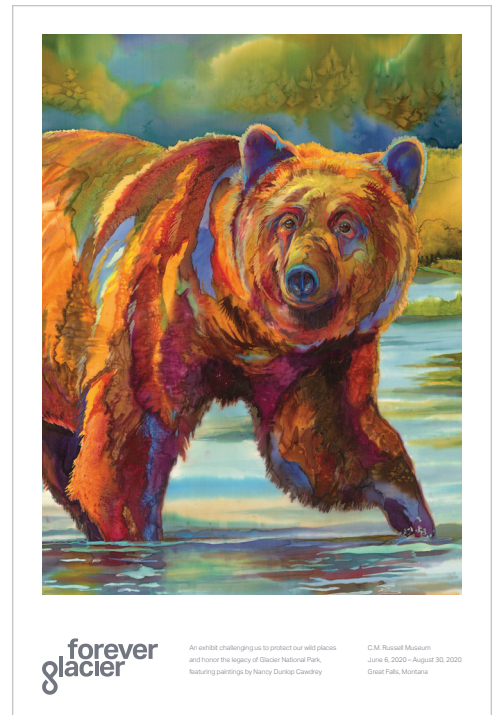


## Merchandising

Forever Glacier provides the opportunity for a Museum store to have a variety of products that have been created specifically for this traveling exhibit.

The items range from a signed and numbered commemorative fine art print, large and small format giclées, a calendar, and more. We are pursuing additional product items and will continue to expand the selections.

The products are sent on consignment and the split is 65% for Forever Glacier and 35% for the museum store. Out of the 65% for Forever Glacier, 5% is donated to Climate Ride\* for their work toward habitat preservation, conservation and support of wild places.



36"x24" Fine Art Print



2021 Wall Calendar

\*Climate Ride is actively addressing habitat preservation and wild areas. Climate Ride is a 501(c)(3) nonprofit organization that organizes life-changing charitable biking and hiking events to raise awareness and support sustainability, active transportation, and environmental causes.





## Upcoming Exhibitions

### **C.M. Russell Museum**

October 2020  
*Great Falls, MT*

### **The Booth Western Art Museum**

October 2021  
*Cartersville, GA*

## Contact

To find out more about this exhibition,  
please contact:

Steve Cawdrey, Manager  
+1-406-249-6222  
[steve@foreverglacier.com](mailto:steve@foreverglacier.com)